



Faculty of Medicine
and Dentistry

FACULTY OF MEDICINE AND DENTISTRY INTERNAL REGULATION

**LF-A-21/02-
ÚZ01**

**ORGANIZATIONAL MANUAL OF THE
FACULTY OF MEDICINE AND DENTISTRY,
PALACKÝ UNIVERSITY OLOMOUC
(FIRST CONSOLIDATED VERSION)**

Contents: This internal regulation defines the organizational structure of the Faculty of Medicine and Dentistry, Palacký University Olomouc.

Responsibility: Dean of the Faculty of Medicine and Dentistry

Date the regulation comes into force: As of the date of its publication

Date the regulation comes into effect: The day following the date of entry into force

Article 1

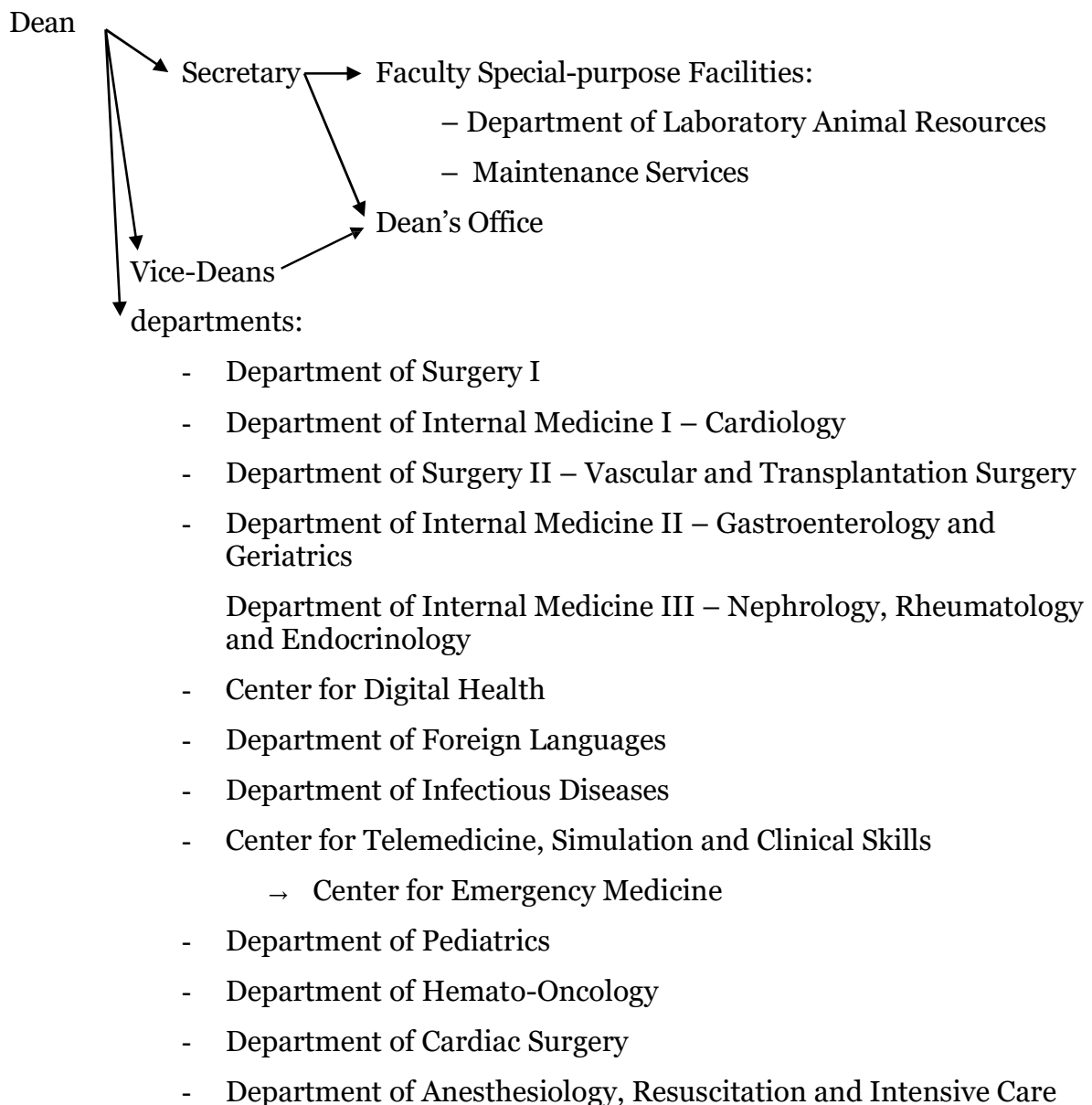
Introductory Provision

Organizational Manual of the Faculty of Medicine and Dentistry, Palacký University Olomouc (hereinafter referred to as the “Faculty”) defines the organizational structure of the Faculty and is governed by the management principles set out in the Organizational Manual of Palacký University Olomouc.

Article 2

Faculty Organizational structure

The Faculty organizational structure is hierarchical, as follows:



- Department of Dermatology and Venereology
- Department of Nuclear Medicine
- Department of Otorhinolaryngology and Head and Neck Surgery
- Department of Respiratory Medicine
- Department of Occupational Medicine
- Department of Psychiatry
- Department of Exercise Medicine and Cardiovascular Rehabilitation
- Department of Oral and Maxillofacial Surgery
- Institute of Dentistry and Oral Sciences
- Department of Neurosurgery
- Department of Neurology
 - Center for Clinical Neurosciences
 - Center for Rehabilitation
- Department of Ophthalmology
- Department of Oncology
- Department of Orthopedics
- Department of Obstetrics and Gynecology
- Department of Radiology
- Department of Traumatology
- Department of Urology
- Department of Biology
- Department of Pharmacology
- Department of Physiology
- Department of Histology and Embryology
- Department of Immunology
- Department of Clinical and Molecular Pathology
 - Laboratory of Molecular Pathology I
- Department of Medical Biophysics
 - Laboratory of Biometrics
- Department of Medical Genetics
 - Laboratory of Inherited Metabolic Disorders
- Department of Medical Chemistry and Biochemistry
 - Laboratory of Cell Cultures
- Department of Microbiology

- Institute of Molecular and Translational Medicine (IMTM-LF UP)
 - Laboratory of Experimental Medicine
 - Laboratory of Molecular Pathology II
 - Laboratory of Genome Integrity
 - Laboratory of Metabolomics
- Department of Anatomy
- Department of Pathological Physiology
- Department of Forensic Medicine and Medical Law
- Department of Public Health

Article 3

Final Provisions

1. Organizational Manual of the Faculty of Medicine and Dentistry, Palacký University Olomouc was approved by the Academic Senate of the Faculty of Medicine and Dentistry, Palacký University Olomouc on May 04, 2021 and by the Academic Senate of Palacký University Olomouc on June 16, 2021.
2. This internal regulation comes into force on the day of publication and becomes effective on the day following the date of entry into force.

Prof. MUDr. Josef Zadražil, CSc.

Dean of the Faculty of Medicine and Dentistry of Palacký University Olomouc

Prof. MUDr. Jiří Ehrmann, Ph.D.

Chairperson of the Academic Senate of the Faculty of Medicine and Dentistry

Amendment No. 1 of the Organizational Manual of the Faculty of Medicine and Dentistry, Palacký University Olomouc was approved by the Academic Senate of the Faculty of Medicine and Dentistry, Palacký University Olomouc on April 05, 2022 and by the Academic Senate of Palacký University Olomouc on April 20, 2022.

It comes into effect on May 05, 2022.