



---

Palacký University  
Olomouc

# The Support Centre for Students with Special Needs



Mgr. Lucie Ješinová,

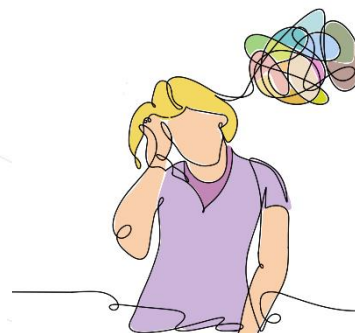
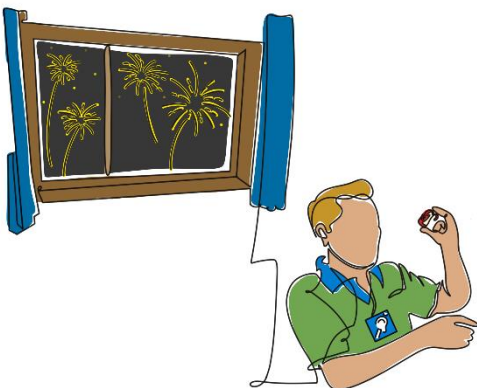
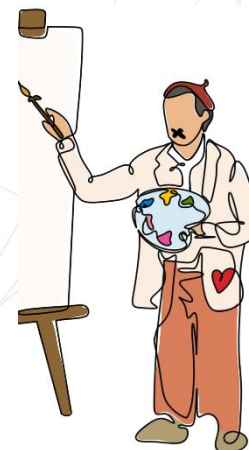


Palacký University  
Olomouc

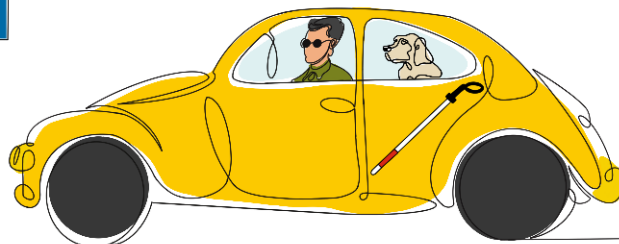


Centrum podpory  
studentů se specifickými  
potřebami

# WHO DO WE SUPPORT?



CPSSP





Palacký University  
Olomouc



Centrum podpory  
studentů se specifickými  
potřebami

- Students with visual impairment.
- Hearing impaired students – sign and spoken language users.
- Students with reduced mobility – lower extremity impairment.
- Students with reduced mobility – upper extremity impairment.
- Students with chronic somatic illness.
- Students with neuro-developmental autism.
- Students with developmental learning disabilities (dyslexia, dysgraphia, dysorthography, dyscalculia).
- Students with mental disorder or illness.
- Students with impaired communication skills.



Palacký University  
Olomouc

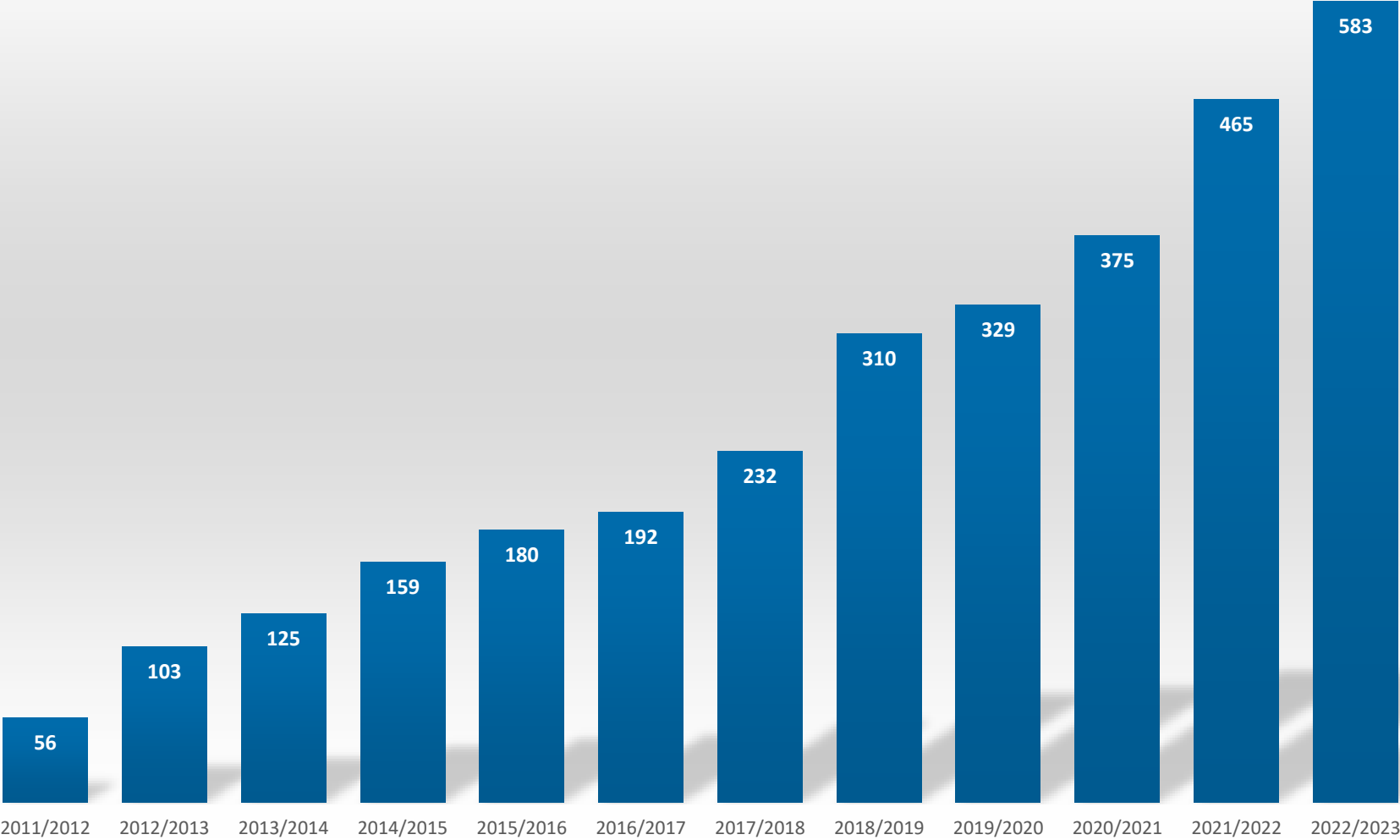


Centrum podpory  
studentů se specifickými  
potřebami

## Number of students with special needs

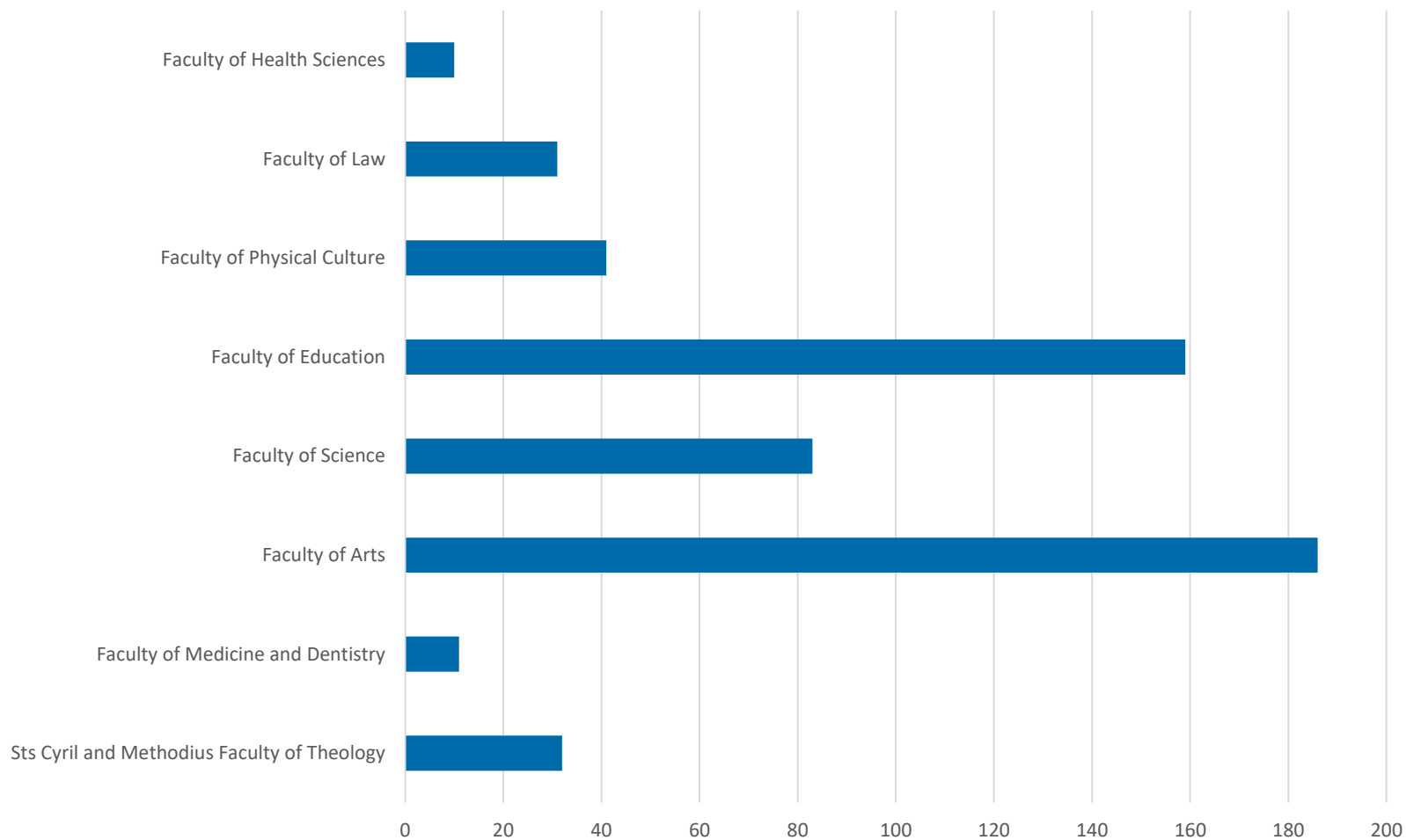
- Current status of students with special needs at Palacký University in Olomouc: **583**.
- In 2012 - 56 students – Increase by 527 students.

# Number of students with special needs in academic years





## Number of students with SN in faculties





## Services we provide

– **Our goal:** Improve the studying conditions and reduce study-related difficulties.

### 1) **For students with disability** (students with physical disability, visual impairment, hearing disability)

- **Personal assistance**
  - study-related guide services,
  - reading services.
- **Editing/stylistic services Study support**
  - specific skill practise,
  - sport assistance.
- **Practise of spatial orientation and independence**
- **Interpreting**
  - sign language interpreting,
  - Oral interpreting.
- **Study material adaptation**
  - digitization and electronic conversion of texts,
  - conversion of printed text to Braille,
  - transcription of audio recordings of lectures and seminars,
  - text enlargement (embossment of study materials, development of embossed graphics).
- **Recording and transcription services**
- **Lends of compensatory sport, optical, acoustic, and tactile aids including computer-based aids** (computers featuring voice output or magnifying SW, Newton-Dictate, white cane, etc.).



## Services we provide

- 2) **For students with another difficulties** (students with learning difficulties, ADHD, autism and psychiatric diagnoses, chronic diseases)
- **Counselling**
    - information to the teachers about the presence of the students with special needs in their class,
    - help with study-related problems,
    - consultations with tutors and other staff of UP Olomouc,
    - consultations with the families of prospective UP students,
    - confirmation that the student is a client of the Support Centre for Students with Special Needs with recommendation for their study.
  - **Personal support**
    - help to solve the current health related problems (students with chronic diseases).
  - **Methodical support**
    - help with drafting individualized education programs,
    - methodical assistance with adapted study texts and curriculum concept,
    - help to adjust the form of testing (e.g. time adjustment, room adjustment etc.),
    - help to modify final examination.
  - **Material and technical resource**
    - lending of technical aids (computers, recorder).





## Students who want to be enrolled

- For registration in the Centre – proper medical report or confirmation is needed (from psychologist, neurologist, pedagogical counselling centre).
- Functional diagnosis and make recommendations for modifications.
- This information is entered into the university information system for the teachers' use.
- Teachers are addressed about the student's support every academic semester.

19.				<a href="#">PDF</a>	<a href="#">B0111A190006</a> - B - P	SPINT	studuje	1	A	LS	Olomouc	Ne	1
20.				<a href="#">PDF</a>	<a href="#">B0113A300001</a> - B - P	SPPma-PREVMi	studuje	1	A	LS	Olomouc	Ne	1
21.				<a href="#">PDF</a>	<a href="#">B0111A190006</a> - B - P	SPINT	studuje	1	A	LS	Olomouc	Ne	1
22.				<a href="#">PDF</a>	<a href="#">B0111A190006</a> - B - P	SPANDR	studuje	1	A	LS	Olomouc	Ne	1
23.									A	LS	Olomouc	Ne	1
24.									A	LS	Olomouc	Ne	1
25.									A	LS	Olomouc	Ne	1
26.									A	LS	Olomouc	Ne	1
27.									A	LS	Olomouc	Ne	1
28.									A	LS	Olomouc	Ne	1
29.									A	LS	Olomouc	Ne	1
30.									A	LS	Olomouc	Ne	1
31.				<a href="#">PDF</a>	<a href="#">M0113A300003</a> - M - P	U1SPN	studuje	2	A	LS	Olomouc	Ne	1

Doporučení z důvodu specifických potřeb studenta:

Studentka se specifickými poruchami učení

Návrh servisních opatření:

- navrhuje navýšit časový limit o 25 % u písemných i ONLINE zkoušek a testů
  - doporučujeme navýšit časový limit na přípravu k ústní zkoušce o 25 %
  - doporučujeme navýšit časový limit na zpracování čteného textu o 25 %
  - doporučujeme navýšit čas určený k formulaci přesné promluvy při ústní zkoušce a minimalizovat časový tlak, bude-li to možné
  - navrhuje zohlednit případné chyby dysortografického charakteru, které se mohou objevit v psaném jazyce českém i anglickém
  - pokud je to možné, doporučujeme poskytnout materiály z výuky v elektronické podobě
- Kontakt na koordinátora: Mgr. Zuzana Melounová (zuzana.melounova01@upol.cz).



Palacký University  
Olomouc



Centrum podpory  
studentů se specifickými  
potřebami

## Other activities of the centre:

- Work with applicants
- Communication with students (from high school) (lecture, workshops – October-November) – help with selection of a suitable study programme
- Communication with teachers
- Courses for academic and non-academic staff (every term)
- Publishing activities /print and video version
- Electronic accessibility mapping
- Help with studying abroad to students with a disability



Palacký University  
Olomouc



Centrum podpory  
studentů se specifickými  
potřebami

# Thank you for your attention!

## Contact:

Mgr. Lucie Ješinová

**E-mail:** [lucie.jesinova@upol.cz](mailto:lucie.jesinova@upol.cz)

**URL:** [www.cps.upol.cz](http://www.cps.upol.cz)

