



Palacký University  
Olomouc

# DORMITORY ACCOMMODATION



**Ilona Utěkalová**  
International relations officer



Palacký University  
Olomouc

[skm.upol.cz/en](http://skm.upol.cz/en)

## **GENERÁL SVOBODA DORMITORY**

**ILONA UTĚKALOVÁ**

**ilona.utekalova@upol.cz**

**+ 420 585 63 8017**

**+ 420 777 000 202**

**OFFICE: ground floor of Generál  
Svoboda Dormitory, room C.1.12**

### **OFFICE HOURS:**

**Mon-Thu: 07:00 – 10:00**

**12:00 – 14:00**

**Fri: 07:00 – 11:30**







Palacký University  
Olomouc

[skm.upol.cz/en](http://skm.upol.cz/en)

## NEŘEDÍN DORMITORY

**RADKA LÁTALOVÁ**

**radka.latalova@upol.cz**

**+ 420 585 63 8883**

**+ 420 737 068 427**

**Office: ground floor of Neředín II  
Dormitory, room A.1.23**

### **OFFICE HOURS:**

**Mon-Thu: 07:00 – 10:00**

**12:00 – 14:00**

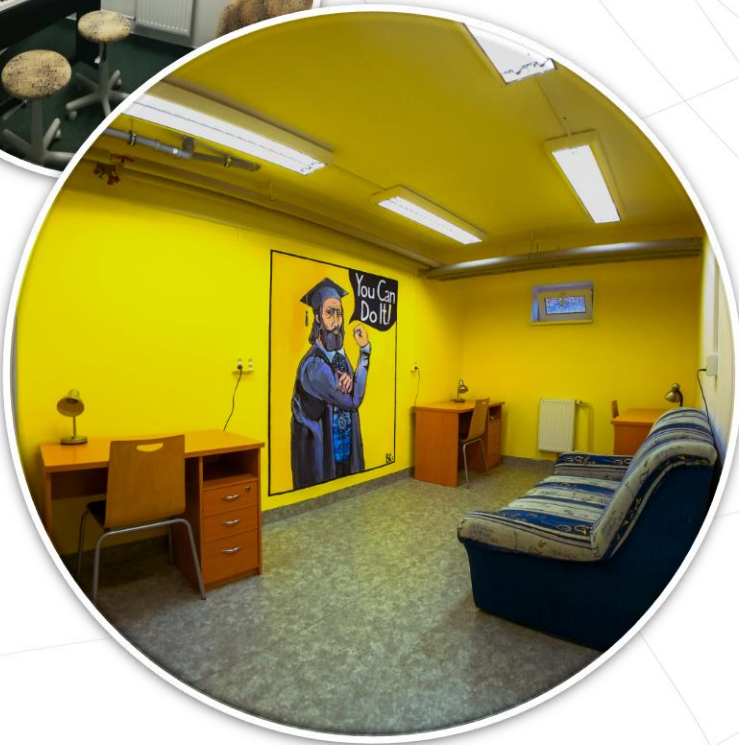
**Fri: 07:00 – 11:30**





- **Neředín dormitories provide suites consisting of 4 or 5 rooms, 2 bathrooms and a kitchen area with a stove, microwave oven, electric kettle, refrigerator (no cooking utensils and dishes, though).**
- **Each room is equipped with beds, writing tables, book shelves and a wardrobe. Internet (wifi) connection is available.**





- The dorms also provide self-service laundry room, drying rooms, study rooms, a gym, music room and common room.
- Students can borrow cleaning equipment, iron, sports equipment at the reception desk.
- Bedding is provided and can be changed every 2 weeks for free.
- Common areas are cleaned once a week, but keeping the room tidy is the students' responsibility.



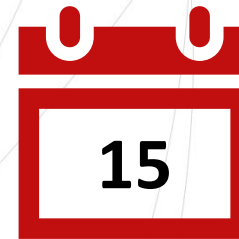


**IMPORTANT  
INFORMATION**

- **By signing your Accommodation Contract you agree to follow all regulations and rules.**
- **Read your Accommodation Contract in detail, as well as the House Rules.**
- **Quiet hours are from 22:00 to 6:00. Be considerate to others!**
- **No smoking inside the dormitories, no drugs, no or excess use of alcohol.**
- **You are obliged to identify yourself when asked by SKM UP employees.**
- **Allowed/prohibited electrical appliances are listed here: [tinyurl.com/4uvkkh3t](http://tinyurl.com/4uvkkh3t)**
- **Extension cord can be borrowed from the linen storage.**



- **Rent is due no later than the fifteenth day of the month for which the fee is paid. Late payment is fined (CZK 300).**



**Payment methods: cash (CZK), card, GP WEBPAY.**

- **Students over 26 years of age have to pay Municipal Waste Fee: [tinyurl.com/4c9cvedt](http://tinyurl.com/4c9cvedt)**
- **Wi-Fi network *eduroam*: change your Wifi password in UP Portal ([portal.upol.cz](http://portal.upol.cz))**



**your login/username is *UP-portal-ID@upol.cz***

**Problems? Contact Helpdesk at [helpdesk.upol.cz](http://helpdesk.upol.cz)**



- **Be careful not to lose your room-keys – there's a fee of CZK 2000 per lost key.**
- **In case of any defects or damage in your room/suite, you have to submit them in the ISKAM system (guide is here <https://bit.ly/2RPhdgo>).**
- **Cleaning the room and taking out garbage is the students' responsibility. All residents are obliged to keep the accommodation facility and the premises clean! Room checks are done periodically and untidy rooms can be fined.**
- **Breaking the rules = termination of your Accommodation Contract. Your UP coordinator and your faculty is informed about any problems at the dormitories!**







- There are several canteens (called menza) and buffets (called FreshUP) that are open during the week (Mon-Fri).
- Open hours and information on how to order a meal is available on our website at <https://skm.upol.cz/en/dining/basic-information>





Palacký University  
Olomouc



## USEFUL LINKS

- [General information for international students regarding dormitory accommodation](#)
- [Dormitory canteens – general information](#)
- [How to report a defect/problem with your room/suite](#)
- [How to pay the rent online through GP Webpay](#)
- [Palacký University Helpdesk – reporting problems with internet connection](#)
- [Dormitory reception desks phone numbers](#)
- [Contact information of dormitory managers and officers](#)



Palacký University  
Olomouc

**For more information visit [our website](#) or contact  
Ilona Utěkalová at [ilona.utekalova@upol.cz](mailto:ilona.utekalova@upol.cz)**

**Enjoy your stay 😊**